



2-WAY AIR-PILOTED VALVES

2-Way Air-Piloted Valves

2-way valves are the simplest pneumatic component – their function is merely to turn an air supply on or off. They may be compared to a beer tap, in the “on” position beer flows from the keg to the mug and in the “off” position the beer flow is stopped. 2-way air piloted valves may have a poppet or spool and when an air signal is applied to the pilot, a Normally-Closed (N.C.) valve is opened and a Normally-Open (N.O.) valve is closed. When the pilot signal is removed, the valve reverts back to its original position.

Medium: Air, Water or Oil

Materials: Brass body, Buna-N seals, stainless steel stem and spring

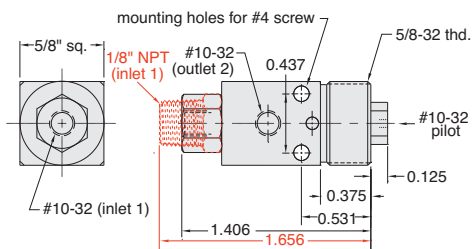
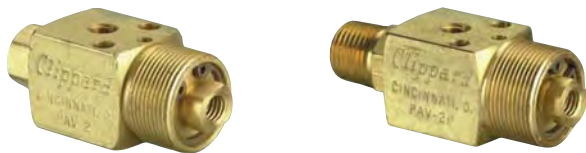
Stem Travel: 1/8" (3.2)

Mounting: 5/8-32 thread or #4 screw. Nut and lockwasher may be ordered separately. Part Number: PAV-MH

Air Pilot Pressure: 15 psig min.

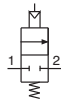
Foot Bracket: FB-1791

Air-Piloted N.C. Poppet Valves



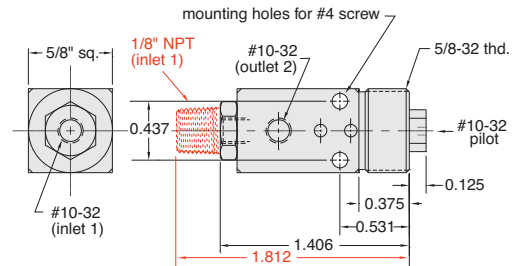
Input Pressure: 300 psig max.

Air Flow: 4.0 scfm @ 50 psig; 6.8 scfm @ 100 psig



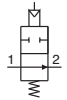
Part No.	Description
PAV-2	Normally-Closed Poppet Valve, #10-32
PAV-2P	Normally-Closed Poppet Valve, 1/8" NPT

Air-Piloted N.O. Spool Valves



Input Pressure: 150 psig max.

Air Flow: 6.8 scfm @ 50 psig; 11.6 scfm @ 100 psig

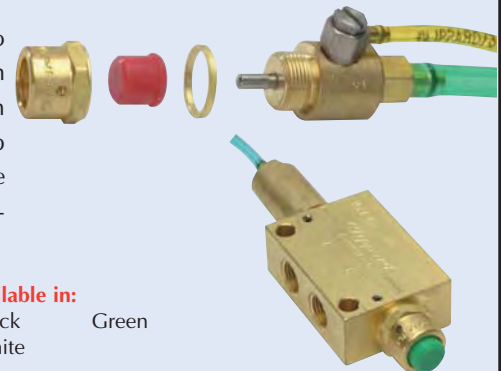


Part No.	Description
PAVO-2	Normally-Open Spool Valve, #10-32
PAVO-2P	Normally-Open Spool Valve, 1/8" NPT

Captivated Push Buttons



The small compact size make the push buttons adaptable to panel mounting. Unlike set screw retained buttons, the screw-on design will not allow the button to fall off. Designed to work with Clippard MAV, MJV, and FV series valves, these buttons also help protect the valve by preventing over-traveling of the stem and the potential for side-load on the valve. See [page 131](#) for more information.



Button Housing Available in:

Black Chrome Electroless
Brass Nickel Plated

Button Colors Available in:

Yellow Black Green
Red White